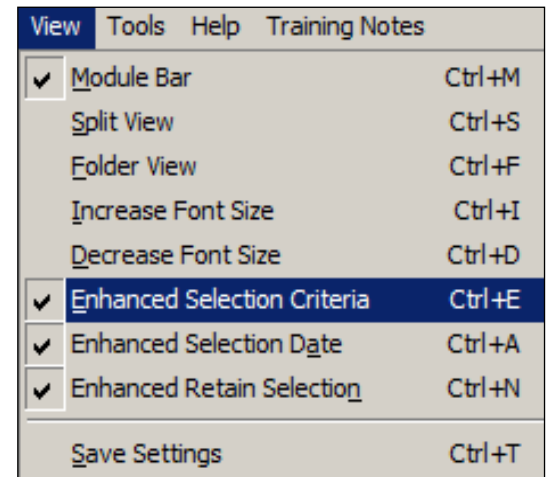


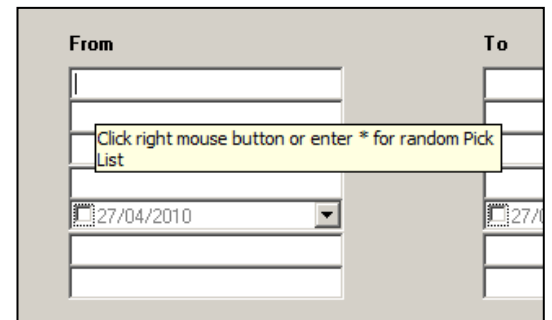
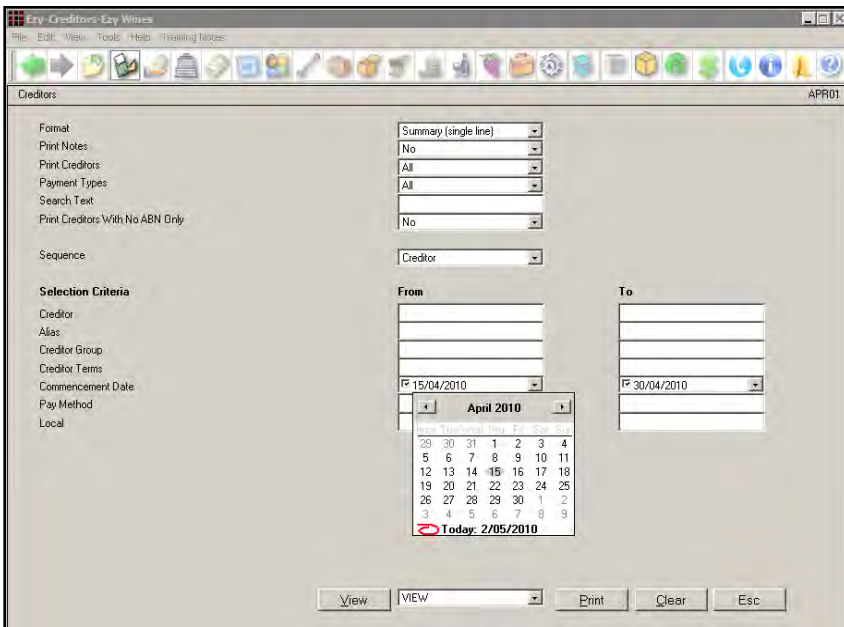
Enhanced Selection Criteria

The **View** menu allows you to specify the selection criteria version you want to use.



On making changes select **Save Settings**.

To navigate the options before the Selection Criteria, either utilise the mouse or the left arrow, right arrow, Enter and/or **Tab** key.



On moving the cursor to a From or To selection, a prompt message is displayed as shown above.

On clicking the mouse right button a pick list is displayed where applicable.

The * (multi-select) and ? (wildcard) features are still available.

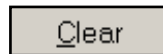
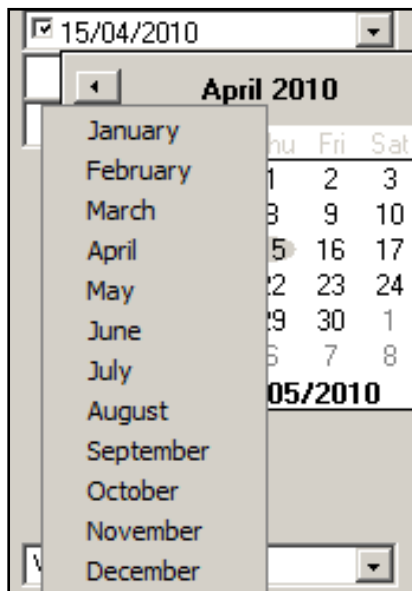
The [Screen] button has been replaced with [View] with the report displayed using a PDF reader such as Acrobat.

Date Selection Criteria Calendar

On clicking on the down arrow to the right of date From/To selection criteria options a calendar is displayed.

On clicking on the year, up and down buttons are displayed allowing you to quickly specify a different year.

On clicking on the month, a list of months is displayed for selection.



To clear any From and To selections you specified the last time you ran this option.



On clicking on **Today**, the selection date will be changed to today's date.

