

# EzyWine.NET

We are currently developing a .NET version of EzyWine using MS Visual Studio (Visual Basic and SQL) which will replace MS Visual FoxPro as our development tool.

This new tool provides for a new interface.

A beta version will be released late 2010 and will be generally available in 2011. Existing clients will only be charged a nominal fee to convert to *EzyWine.NET*.



The *EzyWine.NET* version will be on display at the WineTech exhibition in Adelaide, 4<sup>th</sup> - 7<sup>th</sup> of July 2010.

Creditor	Name	Alias	Group	Terms	Commence Date
BENDCH01	Bendigo Chemical Supplies	CHEM	CHEM	30D	03/03/2003
BENDCH02	Bendigo Chemicals & Machinery	CHEM	CHEM	30D	03/03/2003
BENDFR01	Bendigo Fruit Carriers	MISC	CARR	30D	04/11/2003
BENDIG01	Bendigo Packaging Supplies	PACK	PACK	30D	03/03/2003
BENDST01	Bendigo Promotional & Supplies	OFFICE	PROM	30D	04/03/2003
EZYSYS01	Ezy Systems	MISC	ADMI	30D	03/03/2003
ORLANDO01	Orlando Wines	BULK	BULK	30D	23/01/2008
POWERCO1	Powercor	UTIL	UTIL	30D	01/01/2000
SIGOAK01	French Barrels	MISC	CAPI	30D	23/10/2003
TELSTR01	Telera	UTIL	UTIL	30D	03/03/2003

- Accounts Payable
- Accounts Receivable
- Asset Register
- General Ledger
- Marketing
- Payroll & Human Resources
- Plant Servicing
- Winemaking
  - Weighbridge Reference Maint.
  - Weighbridge Reference Reports
  - Weighbridge Operations**
  - Weighbridge Operations Reports
  - Vintage Report Writer
  - Cellar Reference Maintenance
  - Cellar Reference Reports
  - Cellar Operations
  - Cellar Operations Reports
  - Cellar Operations History
  - Cellar Report Writer
  - Bulk Receiptal/Disp. Operations
  - Bulk Receiptal/Disp. History
  - Samples Despatch
  - Sundry Despatch
  - Grower Payments
  - Grower Payments Reports
  - Winemaking Planning Maint.
  - Winemaking Planning Reports
  - Multi-Cellar Consolidation
  - Contract Winemaking
  - Winemaking Statutory Reports
  - Winemaking Administration
- Bottling
- Purchase Orders
- Stock Control
- User Defined
- System Administration

Payment Types: All

Creditor Additional Grouping: [ ]

Print Creditors With No ABN Only

Print Creditors:
 

- Both
- Active
- Inactive

Format:
 

- Detail
- Summary (Include Address)
- Summary (Single Line)
- Summary (Email)
- Summary (Account)
- Summary (GL Accounts)

Creditor: BENDCH01

Group: CHEM Chemical Suppliers

Alias: CHEM  Active  On Hold

Name: Bendigo Chemical Supplies

Address: 203 High Street

Suburb: Bendigo

State: Victoria

Country: Australia

Postcode: 3550

Phone: 03 5441 2044

Fax: 03 5442 3132

Contact: Bob Pichard

Cheque Payee: Bendigo Chemical Supplies

Payment By: EFT Bank: CBA-MELB

Account No: 123123123 Terms: 30D

Salutation: Mr Pichard

Pickup Address: Bendigo Chemical Supplies, 203 High Street, Bendigo, Victoria, Australia

GST Status: Registered

ABN: 123-123-123

Credit Limit: 0

GST Acquisition: Other - 0%

Liquor Lic. No.:

Currency: AUD

GL Control: 70-010 Trade Creditors

GL Expense: 30-420 Vineyard Chemicals

GL Bank: 60-010 Cash At Bank

Other Details:
 

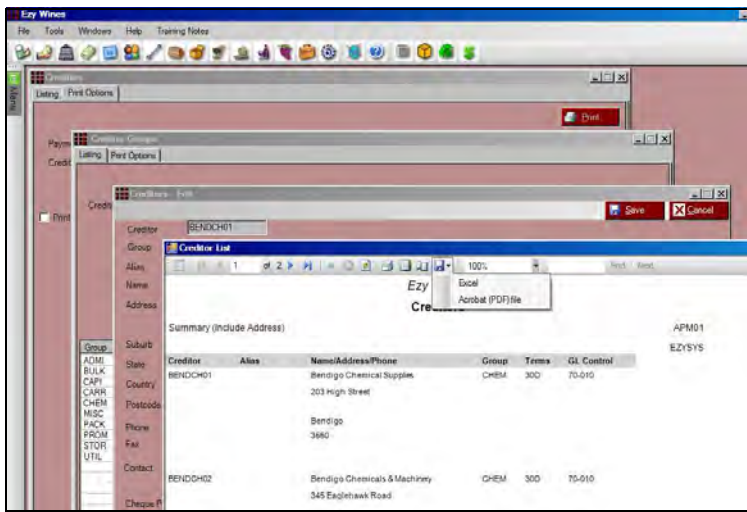
- Email: P/O And Letter: bob@bendigochem.com.au
- Remittance: accpay@bendigochem.com.au
- Remittance CC: bob@bendigochem.com.au
- Website http://: bendigochem.com.au
- EFT Reference: EZYWINE01

GL Account	Name	Group	Sub Category
65-010	Vineyards	FASS	Asset
65-015	Less Acc/Dep Vineyard	FASS	Liability
65-020	Winery Buildings	FASS	Asset
65-025	Less Acc/Dep Wine Build	FASS	Liability
65-030	Plant & Equipment	FASS	Asset
65-035	Less Acc/Dep Plant & Eq	FASS	Liability
65-040	Motor Vehicles	FASS	Asset
65-045	Less Acc/Dep Motor Veh	FASS	Liability
65-050	Office Equipment	BS	Asset
65-055	Less Acc/Dep Office Equipment	FASS	Liability
68-010	Shares	INVE	Asset
68-020	Property	INVE	Asset
68-030	Paintings	INVE	Asset
69-010	Assets Disposal Cr.	CLEA	Asset
69-020	Vintage Grape Expense Cr	CLEA	Asset

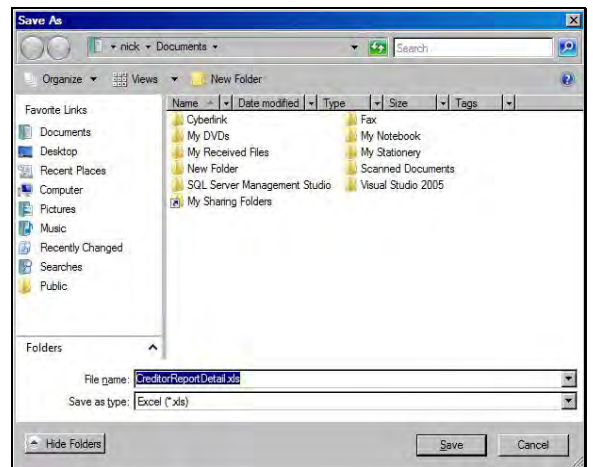
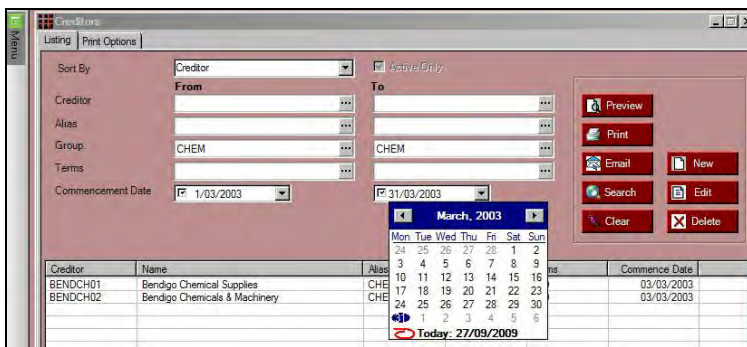
*Pick Lists are now powerful search tools*

# Ezy Wine.NET

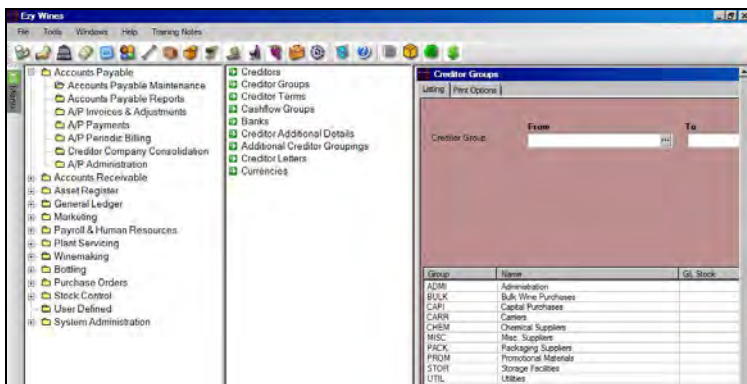
(Cont'd)



*Easily email and fax reports*



*Easily save reports as a spreadsheet*



## Additional Data

We are also taking this opportunity to make the following data changes:

1. Suburb, State and Country are recorded as separate fields against Debtors, Creditors, Growers, Employees and Prospects
2. Transaction Reference (eg. A/P Invoice Adjustment) will be increased from 8 to 16 characters
3. GL Code will be increased from 8 to 12 characters.

